



INNOVATION & **TRANSFORMATION SERVICES**



TYPES OF SERVICE



Community Building

We believe that communities spark meaningful change and can support schools in increasing collaboration and building collective efficacy.



Coaching

Teachers are guided through an individualized journey in which a highly trained coach supports them in surfacing behaviors, beliefs, and ways of being.



Needs Assessment

An Educate Coach will meet with school leaders and teachers to recognize current strengths of the school community and set aligned goals for future work against the predetermined IS areas. The data collection process is both qualitative and quantitative in nature and includes classroom visits and a report of the findings. In some instances surveys, interviews with teachers and/or focus groups may occur.



Leadership Development

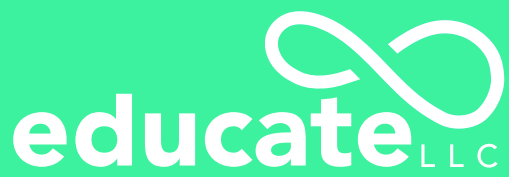
We help school leaders develop and articulate an instructional vision. At Educate, we are committed to empowering all members of a school community to maintain or improve learning environments that provide equity and access for all. Our program is provided through workshops, cohorts, and/or individualized coaching.



Workshops

Our expansive library of adaptable CTLE certified workshops provides the perfect opportunity to inspire and develop your staff.

Our learnings are focused on what caregivers need to provide support outside of the classroom.



COMMUNITY **BUILDING**

PROBLEMS OF PRACTICE



Problems of practice are both complex and actionable, though they are unlikely to have a single right or wrong solution.

For example, a teacher might wish to figure out how to increase student efficacy in a particular mathematics course. If there were an easy answer, all math teachers would apply the one correct approach, and all students would thrive in math. It is precisely because there is no simple, one-size-fits-all solution that makes this challenge well-suited as a meaningful inquiry process. POP Cycles are energized cycles of learning and innovating with educator teams around the problem of practices.

INNOVATIVE TEACHING COOP (ITC)

The ITC provides a safe space for collaboration across multiple schools.

Unlike other professional and personal online communities, the ITC, hosted by Educate, provides a secure platform for professional growth, celebrating wins, and archiving community knowledge and experience. In order to implement an effective professional learning program, leaders must help teachers collaborate and not feel as though they are teaching in silos. Our online community provides a space for teachers and leaders to engage in dialogue, share best practices across rooms, divisions, buildings, or districts. Teachers learn from teachers and gain a voice, connection to others, and ultimately a sense of belonging.





educate^{LLC}

COACHING

TRANSFORMATIONAL COACHING

Educate provides virtual and on-site instructional coaching that leverages technology to provide equitable learning opportunities for students.

Educate believes in Transformational Coaching which is coaching that considers the whole person. We coach around teacher behaviors, teacher beliefs, and ways of being. Helping teachers become more self aware of their identity and beliefs around student learning is essential in order to shift pedagogy.

We utilize the Innovation Spectrum as a tool to support teachers and school leaders in identifying and making shifts in best practices.

- We support teachers through the multiple stages of implementation: Adoption, Adaption, Infusion, leading to Transformation.
- Through coaching, teachers work to implement shifts in areas such as: Higher-Order Thinking, Authentic Learning, Co-Creation of Knowledge, Metacognition, Student Choice, Differentiation, Collaborations, Technology Integration, and developing a Collaborative School Community.

WHAT WE COACH TOWARDS



Behaviors

Coaching which focuses on behaviors often includes instructional practices such as lesson planning, curriculum writing, classroom management, or assessment practices.



Beliefs

When we coach around beliefs, we are supporting teachers to explore their beliefs about student learning. Our beliefs are deeply tied to our behavior, and often behaviors cannot shift without surfacing the beliefs that they stem from.



Ways of being

Each individual has a unique way of being that is deeply connected with our sense of identity. When we coach around ways of being, we help to develop an awareness of how you show up to the world, and how you can best leverage your personal strengths.

OUR COACHING PROCESS





EXAMPLE WORKSHOPS

Any of our workshops can be prepared and delivered in an asynchronous modality.



HIGHER-ORDER THINKING

Learners are exploring concepts by explaining and applying information, breaking concepts into parts and exploring relationships, evaluating information, justifying their stances, and synthesizing information from multiple sources to create original work.

Mathematical Problem Posing

THINKING ABOUT THE NUMBERS

Questions have long been used by teachers to assess students' knowledge, promote comprehension, and stimulate critical thinking. Well-crafted questions lead to new insights, generate discussion, and promote the exploration of content. In this session, we explore how to pose questions to understand the misconceptions that can occur for our students.

Adapting the Math Curriculum

We've all been there - you follow a textbook page by page but it's just not hitting the mark. In this session, we explore how we can adapt existing curricular materials and instruction to better align to standards and student needs. Teachers will learn ways of differentiating lessons to be more responsive to their students by modifying and scaffolding the curriculum to best suit the needs of their students.



HIGHER-ORDER THINKING

■ Project Based Learning

By designing authentic learning activities that are connected to outcomes beyond completing a task, students enjoy a holistic learning experience. In this webinar, participants will understand the fundamentals of designing authentic academic experiences for students to learn through project-based work. Participants will gain ideas to get students excited about research while at home and discover practical strategies to implement to help students develop independence in their learning process.

■ Executive Functioning and Working Memory

When children have opportunities to develop executive functioning and working memory skills they see lifelong benefits. These skills are crucial for learning and development.

Explore executive functioning and how they affect students' capacity to hold onto information. Participants will examine working memory in terms of increasing student accountability in a gradual release model.

■ Less is More

WRITING MATH ASSESSMENT

It doesn't take 50 questions to assess whether a student mastered content. In this session, teachers will explore how to craft assessments that are built from the foundations of their curricular materials. Furthermore, teachers will learn how to ask more critically thinking questions and look at how format of questions and layout of exams affect how students perform on the assessments.

■ Mini Lessons that Matter

Mini-Lessons allow teachers to target their instruction by teaching concepts in bitesized chunks. Make the most of your meeting time with students by creating effective mini-lessons whether your classroom is in person or hybrid.

AUTHENTIC LEARNING

Content, teaching practices, and learning processes are based on student-centered, real-world context, represent authentic, discipline-specific practices and processes, and lead to the creation of products for real-world audiences.



Authentic Assessment Project-Based Learning

Authentic assessments build a bridge between the classroom and the outside world. Students demonstrate proficiency by working towards a solution to a real-world problem. In this session, participants will be able to define the ways in which a project can be considered authentic and create an authentic assessment project plan to implement in their classroom.

Authentic Learning INTEGRATING COMMUNITIES FOR AN AUTHENTIC LEARNING EXPERIENCE

Authentic learning leads to the discovery of purpose and brings joy to the learning process. All communities have relevant infrastructure that can be used as a basis for authentic learning. Using communities as the framework to support the curriculum allows students to see their neighborhood as significant in the development of society. This workshop will look at community specific learning to create authentic learning experiences in the classroom.

AUTHENTIC LEARNING

■ Authentic Learning Activities K-2

Real-life and relevant learning activities motivate students to participate in the learning process. In this session, participants will explore the fundamentals of authentic learning tasks for students in grades K-2 and explore how to design authentic learning experiences for their students.

■ Authentic Learning Activities 3-8

Real-life and relevant learning activities motivate students to participate in the learning process. In this session, participants will explore the fundamentals of authentic learning tasks for students in grades 3-8 and explore how to design authentic learning experiences for their students.

■ Authentic Learning Using Seesaw

Real-life and relevant learning activities motivate students to take part in the learning process. In this session, participants will explore how to use the Seesaw platform with students in grades K-2 to support students in engaging with authentic learning tasks.

■ Math Talks: Wonderings and Noticings (K-3 & 4-12)

Talking about math helps students not only deepen their understanding but provides opportunities for them to practice justifying their thinking. In this session, we will explore how math discourse encourages students to critically think about numbers and patterns as well as explore actionable ways to incorporate doing math talks into your lessons.



Learners are aware of and advocate for their learning strengths and needs. They routinely reflect on their learning experiences and apply insights to subsequent situations.

Executive Functioning and Working Memory (PK-2)

When children have opportunities to develop executive functioning and working memory skills they see lifelong benefits. These skills are crucial for learning and development. Explore executive functioning skills and how they affect students' capacity to hold onto information. Participants will examine working memory in terms of increasing student accountability in a gradual release model.

Executive Functioning Skills (3-8)

When children have opportunities to develop executive functioning skills they see lifelong benefits. These skills are crucial for learning and development. In this session, participants will explore executive functioning skills and how they affect students' capacity to hold onto information, reason and problem solve, be self-aware as well as self-regulate.

Fostering Flexibility in the Classroom

Flexible classrooms help students work collaboratively, communicate effectively, and engage in critical thinking. In this session, we will explore how to support students in the everyday challenges of learning in/out of the classroom. Participants will modify lesson plans and classroom procedures to better support students in dealing with unexpected happenings and collaborating with peers.

Mindfulness and Social-Emotional Learning

By designing instruction with time for students to reflect on their learning, teachers create the opportunity for students to apply current insights to future learning situations. This session will guide teachers through an understanding of what mindfulness is and what it entails along with implications for social-emotional learning.

Math Talks: Wonderings and Noticings (K-3 & 4-12)

Talking about math helps students not only deepen their understanding but provides opportunities for them to practice justifying their thinking. In this session, we will explore how math discourse encourages students to critically think about numbers and patterns as well as explore actionable ways to incorporate doing math talks into your lessons.

Mathematical Feedback Structures

Not only can feedback enhance learning and improve performance, but it can improve students' confidence, self-awareness and enthusiasm for learning. In this session, we examine how to give mathematical feedback to students that targets misconceptions and allows students the ability to work their way out of their confusion. Teachers will learn how to grade through understanding of thinking and not be solely solution-oriented.

STUDENT CHOICE

Learners are actively exploring concepts that they find challenging and interesting. Learners are consistently empowered to determine how they will reach learning objectives.

Fostering Flexibility in the Classroom

Flexible classrooms help students work collaboratively, communicate effectively, and engage in critical thinking. In this session, we will explore how to support students in the everyday challenges of learning in/out of the classroom. Participants will modify lesson plans and classroom procedures to better support students in dealing with unexpected happenings and collaborating with peers.

Virtual Choiceboards

Empowering students to take charge of their own learning results in gains that go beyond the academic task. In this workshop, teachers will explore ways to make learning interactive and differentiated for our littlest learners. We will explore how choiceboards can increase their agency and offer activities that best fit their Zone of Proximal Development.

What's the Hype

Dynamic learning activities keep students engaged and moving at their own pace with opportunities to reflect on what they have learned and apply to subsequent situations. In this session, learn to use Hyperdocs as a learning tool that puts learning in the hands of the student through self-guided or teacher-guided activities that are always interactive!

Project Based Learning

By designing authentic learning activities that are connected to outcomes beyond completing a task, students enjoy a holistic learning experience. In this webinar, participants will understand the fundamentals of designing authentic academic experiences for students to learn through project-based work. Participants will gain ideas to get students excited about research while at home and discover practical strategies to implement to help students develop independence in their learning process.

Virtual Playlists

Empowering students to take charge of their own learning results in gains that go beyond the academic task. In this workshop, teachers will explore how playlists help to promote student agency, increase student engagement, and differentiate content for all students. Participants will create their own playlist to drive student-centered learning and develop independence.



DIFFERENTIATION

Learners are consistently provided with scaffolding. Teachers consistently differentiate the processes and products of learning based on individual needs.



Adapting the Math Curriculum

We've all been there - you follow a text book page by page but it's just not hitting the mark. In this session, we explore how we can adapt existing curricular materials and instruction to better align to standards and student needs. Teachers will learn ways of differentiating lessons to be more responsive to their students by modifying and scaffolding the curriculum to best suit the needs of their students.

Enriching Instruction Using Data

As educators, we all want to provide our students with authentic experiences that meet their needs. In this session, teachers will look at current data for their class(es) and analyze it to determine the need for enrichment. Teachers will then try out some enrichment tools (Nearpod, Edpuzzle, Flipgrid...) that will support them in adjusting their instruction to support the variety of needs students have.

Advanced Small Group Instruction

Tired of doing the same activities in your small group rotations? Take a look at different activities and tools to use with your teacher-led and independent groups. (This session is for teachers who are already comfortable with small group instruction and station rotation.)

DIFFERENTIATION

Animation and Video Creation for Students

Today's students want to express themselves and demonstrate new knowledge in a variety of ways. This session will allow participants to make sure academic work is relevant and engaging by using tools that allow teachers and students to create animations and videos.

Spiral Math

BREAKING DOWN STANDARDS TO DRIVE CONSISTENT SPIRALING

Everytime students encounter a topic, they learn more and are able to dig deeper. Good spiraling of skills build fluency and fluency is the building block for Higher-Order Thinking. In this workshop, we will unpack math standards to determine needs for spiral review as well as explore daily practices that can be embedded within a day such as number tasks, mental math, and fluency practice.

Differentiating For Students Needs Digitally

ALSO AVAILABLE IN EARLY CHILDHOOD

Whether students are in the classroom or at home, teachers still need to plan for varying levels of needs and abilities. In this workshop, participants will explore how to differentiate content, process, and product within their assignments and match the learning to the needs, interest, and abilities of all your students.



Partnering and instructional groups effectively support the learning objective, and they are varied appropriately, with lots of opportunity for student choice. Students collaborate smoothly within groups.

Advanced Google Apps

Do you have Google docs and Classroom down? Are you ready to take your Google use with your students to the next level? In this session, participants will be invited to take a deeper dive into using forms to create assessments, sheets, as well as Google drawings to create digital manipulatives.

Google Extensions

Making the most of your Google Classroom takes having some tricks up your sleeve. In this workshop, participants will look at useful Chrome extensions (Screencastify, Kami, EdPuzzle, and Mindful Break to name a few) to take your use of Google Apps with your students to the next level.

Mathematical Feedback Structures

Not only can feedback enhance learning and improve performance, but it can improve students' confidence, self-awareness and enthusiasm for learning. In this session, we examine how to give mathematical feedback to students that targets misconceptions and allows students the ability to work their way out of their confusion. Teachers will learn how to grade through understanding of thinking and not be solely solution-oriented.

Google Apps to Facilitate Writing

Tired of stacks of papers piling up? Take a look at how Google docs can be used to create collaborative writing assignments, add annotations, and provide meaningful peer and teacher feedback to students.

Introduction to Google Apps

Explore how the G-Suite for Education apps can be used to give students opportunities to create, collaborate and share their learning in authentic ways. This session is for Google beginners who are looking to become comfortable with apps they can use with their students to enrich their learning.

Teaching at Hyperspeed

Finding a tool that allows for feedback, collaboration, as well as parent engagement seems like a daunting task. This session explores using Padlet as a launchpad for creative learning and collaboration. a space for students to show their thinking, a space for teachers and peers to provide feedback to students, as well as a means for engaging parents.

TECHNOLOGY INTEGRATION: **STRUCTURES**

Learning experiences are transformed through the use of technology, and learners become confident digital citizens.

Advanced Small Group Instruction

Tired of doing the same activities in your small group rotations? Take a look at different activities and tools to use with your teacher-led and independent groups. (This session is for teachers who are already comfortable with small group instruction and station rotation.)

Flipped Learning

SETTING UP A FLIPPED CLASSROOM AND ROUTINES

Move over station rotation; there's a new blended learning model in town! Take a deeper look into how a flipped learning model moves direct instruction to the individual, resulting in the group learning space becoming a more dynamic and interactive learning environment where students can apply concepts.



TECHNOLOGY INTEGRATION: STRUCTURES



Fostering Flexibility in the Classroom

Flexible classrooms help students work collaboratively, communicate effectively, and engage in critical thinking. In this session, we will explore how to support students in the everyday challenges of learning in/out of the classroom. Participants will modify lesson plans and classroom procedures to better support students in dealing with unexpected happenings and collaborating with peers.

Hybrid Learning

BEST PRACTICES

Increasing engagement and connectedness for students and families is hard enough without the added layer of navigating a hybrid classroom environment. In this session, we will focus on best practices for learning that can be applied in any setting.

Mini-Lessons that Matter

Mini-Lessons allow teachers to target their instruction by teaching concepts in bitesized chunks. Make the most of your meeting time with students by creating effective mini-lessons whether your classroom is in person or hybrid.

Planning and Organizing your Digital Classroom in a Disorganized World

Juggling all the demands of the classroom can be a daunting task. Take a look at different sample schedules to help you plan the big picture as well as planning for instructional time, time for small groups, and time to provide feedback. This session also looks at how Google Classroom can help you and your students stay organized and stick to routines.

COLLABORATIVE SCHOOL COMMUNITY

Members of the school community consistently collaborate in innovative ways, within the school and with other organizations and the broader community.



■ Building Leaders

As a leader, many stakeholders rely on your expertise and leadership. This workshop will allow participants to engage and focus on hosting meaningful staff meetings, classroom walkthroughs, scheduling, and supporting teachers through navigating a hybrid classroom environment.

■ Teaching the Whole Child

When we approach teaching the whole child, we aim to ensure that all our students feel healthy, safe, supported, and engaged while being appropriately challenged. In this workshop, participants will explore what it means to think about the “whole child”. They will then break out into groups to explore resources and plan for their classrooms based on their preferred area of focus (School culture/family engagement/critical thinking, and social-emotional wellness).

COLLABORATIVE SCHOOL COMMUNITY

■ Community Building

Core characteristics of the learning environment include building and maintaining relationships. This session invites participants to take a deeper look at tools and tips for creating a classroom community (routines, class jobs, tech teams, celebrations, etc...) staying connected to students and facilitating collaboration.

■ Empowering Parents to be Partners in Learning

Research shows that parent engagement is closely linked to better student behavior, enhanced social skills and higher academic achievement. In this session, participants will engage in setting up routines and structures to empower parents to help their students grapple with challenges and be a partner in learning in and out of the classroom.

■ How to Foster a Culture of Risk Taking

It's often said that you have to make mistakes to learn, but failure can be scary. This is a high interaction session that will engage educators in dialogue around how to foster a culture of risk taking in their school with a goal orientation. We will norm around a definition of risk taking and what it means to explore the creative tension between our goals and where we are now, and then apply what this could look like in our classrooms.

■ Maintaining Relationships

Core characteristics of the learning environment include the building and maintaining of relationships. It is in this environment that students feel free to take risks and bring their whole selves to the learning experience. This session invites participants to take a deeper look at tools and tips for staying connected to students and facilitating meaningful discussion.



CAREGIVER WORKSHOPS

■ Communication Tools

School communities use a plethora of platforms and tools in order to effectively teach and communicate with students and parents. This session will explore school specific tools that parents need to be comfortable navigating to support their children while staying up to date on important communications from the school and teachers.

■ Empowering Parents to be Partners in Learning

We've all heard that it takes a village to raise a child. In this age of virtual and hybrid learning, having parents as partners in learning is more important than ever. This session helps participants set up routines and structures to empower parents to help their students grapple with challenges.

■ Guide by the Side: Supporting Your Child During At-Home Learning

Being involved in your child's academics and being able to help them at home is important, but how do you support your child while still letting them do the work and sometimes struggle? In this webinar, take a look at the do's and don'ts of supporting your child during at-home learning. Learn strategies that help your child engage in productive struggle as well as learning the line between modeling and doing the actual work.

■ Creating Home Environments that Support Remote/Hybrid Learning

Want to set your child up for success while they're learning at home? This session focuses on four topics that help us in supporting our children with hybrid and remote learning. Participants will examine the importance of routines, organization of workspace, tips to help when children are avoiding work, and helpful strategies to support ELA, writing, and math at home.

■ Enrichment Activities

We've all heard the terms summer slide and now the new Covid-slide. In this webinar, explore different tools and activities that you can do with your child to help them make academic gains while promoting kids to take control of their own learning.

■ Ins and Outs of Google Tools: Google Classroom 101

Whether you want us to introduce the ins and outs of Google Classroom to your parents or prepare your teachers in how to best introduce it to their students' guardians, we've got you covered. Help parents become familiar with the components of Google Classroom and how they can support their children as they use it.

These live courses will allow participants to engage in meaningful and relevant learning opportunities and, what's more, they will be able to develop instructional strategies, create accessible and scaffolded/ enriched learning experiences for students/ Each course will be 3 sessions in length with opportunities for participants to engage in open workshop throughout. Lessons will be facilitated via Zoom with an Educate Coach. Participants will engage in collaborative learning and gain access to high-quality resources to utilize with their students.

Math in an Inquiry Classroom

Math is a vibrant, dynamic part of our lives, but our students do not always recognize its beauty. This course will allow you to explore the ways in which we can encourage a love of Math, from grades K and up. It will provide you with opportunities to look at your instruction from a different perspective to better support your students on their Math journey.

Connections to the Classroom:

- Deeper understanding of the progression of Math skills/concepts across all grade levels
- Differentiated learning experiences that meet the needs of all learners and provide access to content
- Increased discourse among students in the classroom

Authentic Learning

It can be a challenge keeping students motivated and engaged in the learning process. Implementing elements of authentic learning can help give students ownership that truly drives the classroom experience and lets the teacher act as a facilitator. During this course, we will explore which elements of authentic learning already exist in your instruction and which can be used to enhance it.

Connections to the Classroom:

- Students' ability to participate in a dynamic learning environment that requires creative thinking and problem solving
- Increased student agency and ownership over learning, resulting in engaged, motivated students
- Multiple access points create a more equitable learning experience for all students

Building Classroom Community

DIGITAL WORLD

How can you build a community when it may need to rely solely on a stable Wifi signal? This course will harness your technology savviness to ensure students and families are able to maintain a home/school relationship no matter the setting. Explore ways to collaborate and share together to strengthen and build upon your community.

Connections to the Classroom:

- Students have an increased sense of belonging through meaningful discussion and collaboration
- Families feel connected to the classroom and learning environment in the digital space
- Students increase their agency self-regulation, and decision-making skills through reflection and choice



educate^{LLC}

**LEADERSHIP
DEVELOPMENT**

LEADERSHIP DEVELOPMENT PROGRAM

Our new environment demands that leaders have:

- Clear instructional vision
- An ability to reflect, to problem solve, and be creative
- An openness to learn
- An ability to develop and align efforts toward common goals impacting student opportunities
- Builds relationships and empowers all members of the community to embrace and contribute to achieving a shared vision
- Are aware of the value of resilience

With these things in place, it allows development, improvement, and the opportunity to maintain learning environments that provide both equity and access for all stakeholders.

Our leadership program is designed to help leaders build these skills to develop critical leadership for teams. Educate draws on proven research and frameworks that drive impactful leadership in the areas of teamwork, empowerment, and innovation.



LEADERSHIP DEVELOPMENT PROGRAM

■ Visioning Development

Shaping leadership to meet the needs of a school in order to maintain a focus that the staff wants to get behind and drives effective change.

Sessions Include:

- Leadership Assessment and Reflection
- Visionary Leadership Part I and II
- Authentic Leadership
- Instructional Leadership Part II

■ Alignment and Systems Thinking

Organizing the many nuances of a school through culture development and evidenced-based decision making so it is transparent and effective with staff buy-in. Leadership Assessment and Reflection.

Sessions Include:

- Visionary Leadership Part II
- Instructional Leadership Part III
- Servant Leadership
- Transformational Leadership Part I-III

■ Instructional Framing and Development

Establishing a clear vision of effective instruction and driving professional learning to raise student achievement through data-decision making and teacher reflection Leadership. Assessment and Reflection.

Sessions Include:

- School Assessment and Reflection
- Instructional Leadership Part I-IV
- Visionary Leadership Part I and II
- Adaptive Leadership



HOW WE DO
WHAT WE DO

HOW WE DO WHAT WE DO

Our Innovation Spectrum Drives it all.

The Innovation Spectrum is Educate, LLC's professional development continuum for learners, learning, and teaching with technology. This tool helps leaders identify and make shifts in best practices. It establishes pathways for transformation, offering teachers and school leaders a clear, but differentiated guide for improvement, focused on the outcomes of empowering teachers and school communities to ensure equitable access and opportunities for all students.

■ Pedagogical practices

Our goals and learning environments

We believe that pedagogical practices and professional learning experiences can be shaped and innovation can occur when students, teachers, and school leaders have an opportunity to evaluate their work through the lens and conceptual framework of these educational outcomes:

- **Deeper Thinking & Learning**
- **Student Agency & Individual Access**
- **Supportive & Collaborative School Cultures**



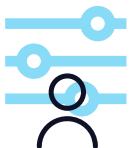
HOW WE DO WHAT WE DO



Deeper Thinking and Learning

Students are consistently working on cognitively complex tasks and grappling with intellectually demanding problems.

As a result, students are developing deeper critical and creative thinking skills that will enable them to solve complex problems and become more future-ready. More opportunities for creative and critical thinking will unleash the natural love of learning for all!



Student Agency & Individual Access

Teachers are harnessing technology tools to create learning environments in which students have greater control over what and how they learn.

With exemplary teacher facilitation, students are working on tasks that spark their interest and excitement. Each student is provided with the supports they need to be able to access learning materials and create work that makes them feel proud. As a result, students develop the lifelong learning habits, deep interests and expertise, and the analytical research skills that will support them in interacting with the complex information systems of the real world.



Supportive & Collaborative School Cultures

We understand that effective schools have effective communities of practice.

We utilize the Innovation Spectrum as a tool to support teachers and school leaders in identifying and making shifts in best practices. We support teachers and leaders through the multiple stages of implementation: Adoption, Adaptation, Infusion, leading to Transformation.

INNOVATION SPECTRUM

The Innovation Spectrum is Educate's framework for supporting schools to build meaningful and equitable teaching and learning practices.

The nine focus areas are codified from our research base and field experience.

DEEPER THINKING AND LEARNING



Higher order thinking

Learners are exploring concepts by explaining and applying information, breaking concepts into parts and exploring relationships, evaluating information, justifying their stances, and synthesizing information from multiple sources to create original work.



Authentic learning

Content, teaching practices, and learning processes are based on student centered, real-world context, represent authentic, discipline-specific practices and processes, and lead to the creation of products for real-world audiences.



Co-creation of knowledge

Teachers effectively facilitate discussions and activities in which learners are incorporating their own ideas and misconceptions to create knowledge.



Metacognition

Learners are aware of and advocate for their learning strengths and needs. They routinely reflect on their learning experiences and apply insights to subsequent situations.

STUDENT AGENCY AND INDIVIDUALIZATION



Student choice

Learners are actively exploring concepts that they find challenging and interesting. Learners are consistently empowered to determine how they will reach learning objectives.



Differentiation

Learners are consistently provided with scaffolding. Teachers consistently differentiate the processes and products of learning based on individual needs.



Collaboration

Partnering and instructional groups effectively support the learning objective, and they are varied appropriately, with lots of opportunity for student choice. Students collaborate smoothly within groups.

SUPPORTIVE AND COLLABORATIVE SCHOOL CULTURE



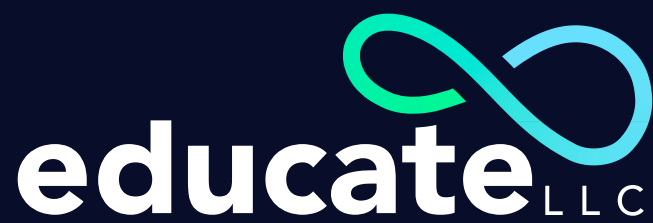
Technology integration

Learning experiences are transformed through the use of technology, and learners become confident digital citizens.



Collaborative school community

Members of the school community consistently collaborate in innovative ways, within the school and with other organizations and the broader community.



educatellc.com

555 8th Ave., Suite 1709, New York, NY 10018
info@educatellc.com